

Vernon County

Whether driving the Great River Road, rousting a wild turkey, navigating the Mississippi by houseboat, wilderness tent-camping, staying in rustic cabins, biking cross-country, charting the Blackhawk Trail, hiking around Sidie Hollow Lake, exploring Rustic Roads, bluebird watching at Norskedalen, trout fishing in Timber Coulee or the West Fork Kickapoo River, horseback riding in Wildcat Mountain State Park, riding 250 miles of signed snowmobile trails, spotting bald eagles near Blackhawk park, canoeing or kayaking the Kickapoo River, skiing groomed cross country trails, ice fishing, photographing wild flowers, hunting morels or wild asparagus . . . you'll experience God's Country firsthand in Vernon County.



Picturesque strip-contoured farmland, rock outcroppings, shadowed hollows and soaring ridgetops, hillsides studded with maples, oak and birch, winding country roads and hidden valleys contribute to the quiet beauty and lure of Vernon County.

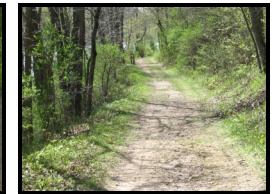
Viroqua

Viroqua is a MAIN STREET CITY, featured in the Wall Street Journal, CBS evening news, Smithsonian Magazine and Readers Digest. Located on a ridge along U.S. Highway 14/61 at the junction of Highways 56, 82 and 27, Viroqua is a city on the move. Viroqua has a busy and varied downtown, and a pride in its heritage, enterprising spirit and community wide accomplishments. For more information, visit www.viroqua-wisconsin.com.

220 Airport Road
Viroqua, WI 54665

Vernon County Land & Water Conservation Department

Sidie Hollow County Park & Campground



Vernon County Land & Water Conservation Department

220 Airport Road
Viroqua, WI 54665
(608) 637-5480

Sidie Hollow County Park & Campground is located 3 miles southwest of Viroqua on County Trunk Hwy. XX. From Viroqua, take State Hwy. 56 west approximately 1/2 mile to County XX and follow signs to the park.

Sidie Hollow Park

Sidie Hollow is a 521 acre scenic park located in the Town of Jefferson, just 3 miles southwest of Viroqua on County Road XX. Because of its fantastic location, natural scenic beauty, and because of the abundance of outdoor activities possible, Sidie Hollow Park remains the most visited of Vernon County's Parks & Forests.

Sidie Hollow Park is a floodwater retarding and water based recreational development area. In the core of the park is a 38 acre multipurpose reservoir which was completed in 1965. The lake boasts excellent fishing year round for such species as trout, largemouth bass, sunfish, crappies and perch. A hiking trail around the entire lake provides the added benefit of creating fishing access to nearly every inch of the shoreline. A fishing pier provides additional access to the lake for anglers. Gas powered motors are not allowed on the lake so as to protect the resource from harmful pollutants.

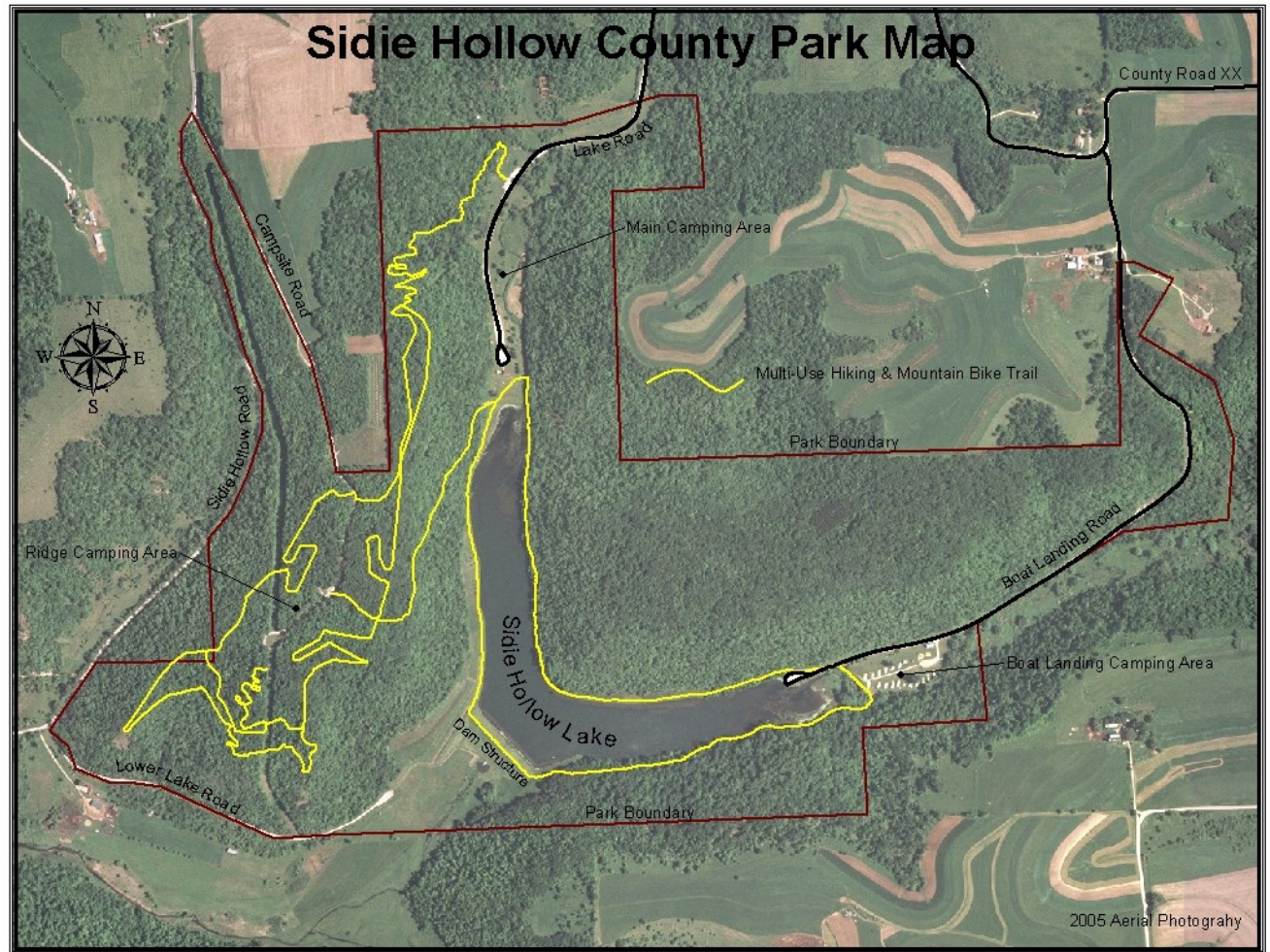
Sidie Hollow Park contains a boat landing, two roofed picnic shelters, over 2 miles of hiking and cross-country skiing trails, 6 miles of mountain bike trails, hot showers, flush toilets, a natural prairie area, playground equipment, and 73 camp sites, including 17 with full utility hookups, and 21 with electricity. Three wells provide fresh water for campers and park visitors alike. In addition, two quality trout streams meander through the park before entering Sidie Hollow Lake.

Fishing & Hunting

Sidie Hollow Lake boasts above average fishing. Anglers can be seen catching good size trout, largemouth bass, sunfish, crappies, perch and an occasional walleye. There is a public boat landing to serve anglers. Gas powered motors are not allowed so as to protect the lake resource from harmful pollutants. The hiking trail around the lake provides anglers great access to the shoreline. A new fishing pier was added in 2006 to further enhance the fishing experience at Sidie Hollow. Ice fishing is popular on the lake during the winter months. Hunting is allowed in the Park between October 15th and April 15th. Wisconsin state hunting regulations and seasons apply.

Hiking & Biking

A two-mile hiking trail around Sidie Hollow Lake provides visitors wonderful vistas of the scenery around them. The well maintained trail is relatively flat and easy to walk for people of all ages. A secondary benefit of the trail is that it provides great access to the lake shoreline for fishing. A local trails group, Vernon Trails, has developed approximately 6 miles of superb mountain bike trails in the forest surrounding the upper camping area.



Camping

Sidie Hollow Campground features 73 sites, in three distinct and separate camping areas. The Boat Landing area features 22 sites, including 5 primitive and 17 full hookups. There are hot showers, flush toilets, a picnic shelter building, a playground area, access to the hiking trail, boat and canoe access to the lake.

Sidie Hollow's Main Camping area features 31 sites, including 14 primitive, and 17 with electricity. The Main Camping area features hot showers and flush toilets, a dump station, a picnic shelter, cold beverage dispenser, a playground area, access to the hiking trail, access to mountain bike trails and lots of open space for kids to run & play.

The Ridge Camping Site features 20 sites, including 16 primitive and 4 with electrical hookups. The Ridge Camping Sites are for those who want to get away from it all. It is generally quiet, except for the countless deer, turkeys and songbirds. A hiking trail leads to the lake in the valley below. There is access to nearly 6 miles of mountain bike trails that wind through the forest.

Sidie Hollow Campground is open from April 15th through October 15th each year. Reservations are not always necessary but are strongly recommended, particularly for electric sites, and for holiday weekends. Call (608) 637-7335 or (608) 637-5485 for Reservations, or visit www.vernoncounty.org/parks. Reservations can now be made online for added convenience.