

Esofea/Rentz Memorial Park & Campground

Esofea/Rentz Memorial Park & County Forest is a multi-use park conveniently located approximately 6 miles from each of the communities of Chaseburg, Coon Valley, Viroqua and Westby.

Camping

Esofea/Rentz Memorial Park is open for camping between April 15th and October 15th each year.

There are 27 campsites, including 4 with full hookups, 8 with electricity and 15 primitive sites with no utility hookups. Fresh water is available for campers and park users. In 2010 Esofea Park's restroom was upgraded to indoor plumbing with the addition of flush toilets. This is a great improvement for campers and all park users.

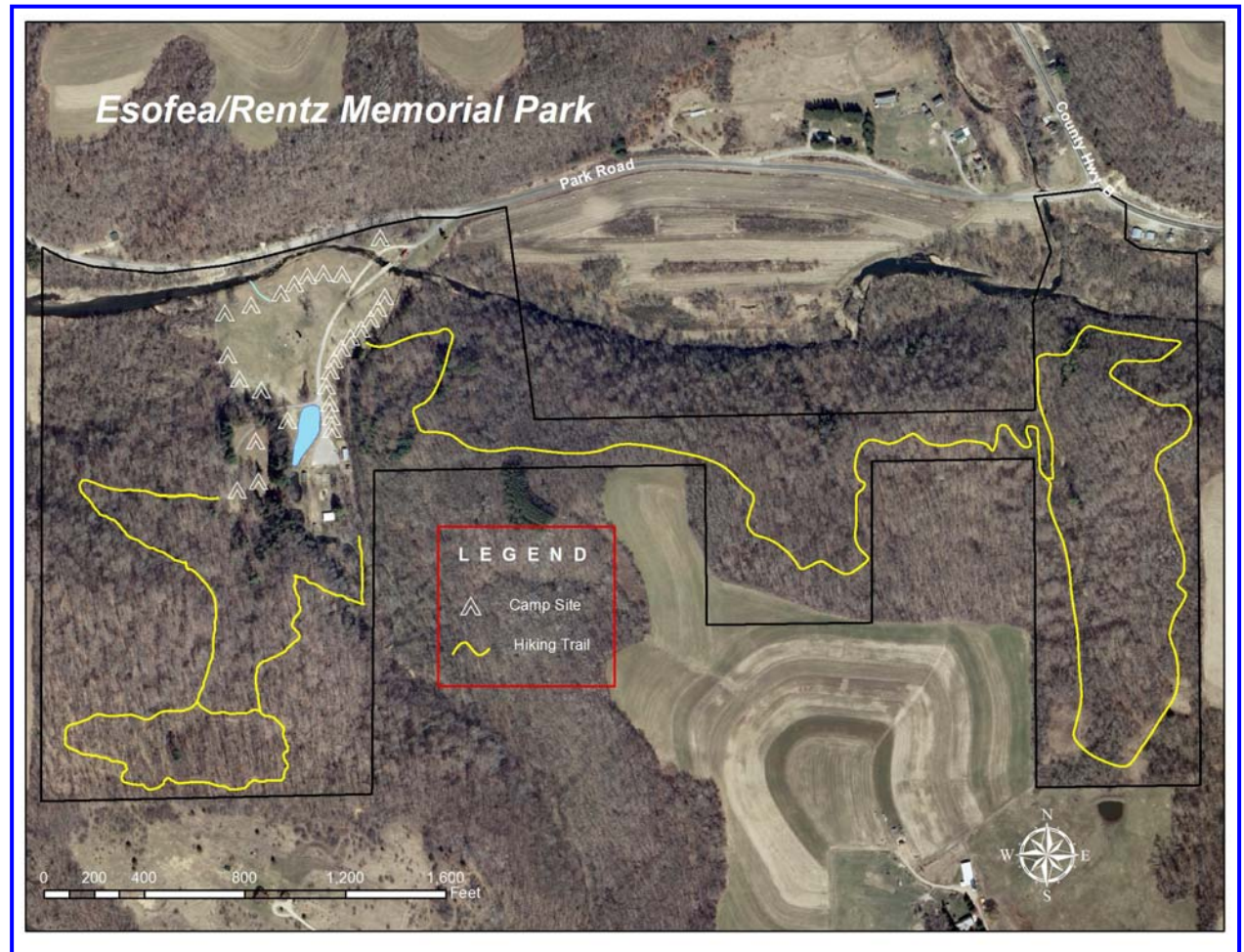
Camping Reservations are not always necessary but are strongly recommended, particularly for electric sites, and for holiday weekends. Call (608) 637-7335 or (608) 637-5485 for Reservations.

Fishing & Hunting

Esofea/Rentz Memorial Park features above average fishing. Anglers can be seen catching good size trout in one of the 5 spring fed ponds, or in the North Fork of the Bad Axe River flowing through the property. Hunting is allowed in the park between October 15th and April 15th. All State of Wisconsin hunting and fishing regulations and seasons apply.

Family Reunions & Gatherings

The picnic shelter at Esofea Park is a popular spot for family reunions, birthday parties, anniversary parties and other gatherings. There is electricity and lights, and a kitchen facility that provides an ideal "food line" for potluck meals. It's easy to enjoy a meal in this beautiful setting, while listening to the sound of running water in the nearby spring ponds, and listening to the call of a variety of song-birds that make there home here.



Hiking

Esofea Park is made for hiking, with nearly 3 miles of maintained trail. Some stretches are an easy hike, while other sections cross difficult terrain that should be used by experienced hikers only.



Hiking Trail at Esofea

Be sure to watch the signs for those areas and be careful should you choose to hike along the trails marked difficult. The walk is beautiful and gives hikers a chance to experience the deep rich forest that surrounds Esofea Park.

CONTACT INFORMATION

Campground & Shelter Reservations
(608) 637-7335 or (608) 637-5485

Parks Administrator
(608) 637-5485
adam.ash@vernoncounty.org

County Forester
(608) 637-5476
andy.lachance@vernoncounty.org
Web Site: www.vernoncounty.org/parks

Vernon County

Whether driving the Great River Road, rousting a wild turkey, navigating the Mississippi by houseboat, wilderness tent-camping, staying in rustic cabins, biking cross-country, charting the Blackhawk Trail, hiking around Sidie Hollow Lake, exploring Rustic Roads, bluebird watching at Norskedalen, trout fishing in Timber Coulee or the West Fork Kickapoo River, horseback riding in Wildcat Mountain State Park, riding 250 miles of signed snowmobile trails, spotting bald eagles near Blackhawk park, canoeing or kayaking the Kickapoo River, skiing groomed cross country trails, ice fishing, photographing wild flowers, hunting morels or wild asparagus . . . you'll experience God's Country firsthand in Vernon County.



Picturesque strip-contoured farmland, rock outcroppings, shadowed hollows and soaring ridgetops, hillsides studded with maples, oak and birch, winding country roads and hidden valleys contribute to the quiet beauty and lure of Vernon County.

Nearby Communities: For more information on Vernon County and the communities nearby Esofea/Rentz Memorial Park, please visit the following websites:

Viroqua— www.viroquawi.com

Westby— www.westbywi.com

Vernon County— www.visitvernoncounty.org

220 Airport Road
Viroqua, WI 54665

Vernon County Land & Water Conservation Dept.

Esofea/Rentz Memorial Park, Forest & Campground



Vernon County Land & Water Conservation Dept.

220 Airport Road
Viroqua, WI 54665
(608) 637-5480

Park Location: Approximately 6 miles northwest of Viroqua, or 5 miles southwest of Westby along County Trunk Hwy. B.