

Kooyumjian Information

Kooyumjian-Lost Creek Vernon County Forest is a 120 Acre property that was donated to Vernon County by Thomas and Edith Kooyumjian in 2001. The Kooyumjian's gave the people of Vernon County a fantastic gift—a tree farm with some mature timber stands, and many tree plantations with white pine, European larch, black walnut, red oak, butternut, cherry, and green ash.

Forest Management

Kooyumjian-Lost Creek Vernon County Forest is enrolled in Wisconsin's County Forest Program. The timber is managed for long term production. Most of the proceeds from timber sales at Kooyumjian-Lost Creek will remain in the county. The State of Wisconsin will receive 20%, the Town of Union 10% and Vernon County will retain the remaining 70%. These funds are used to further enhance forest management at Kooyumjian-Lost Creek and all other Vernon County Forest properties.

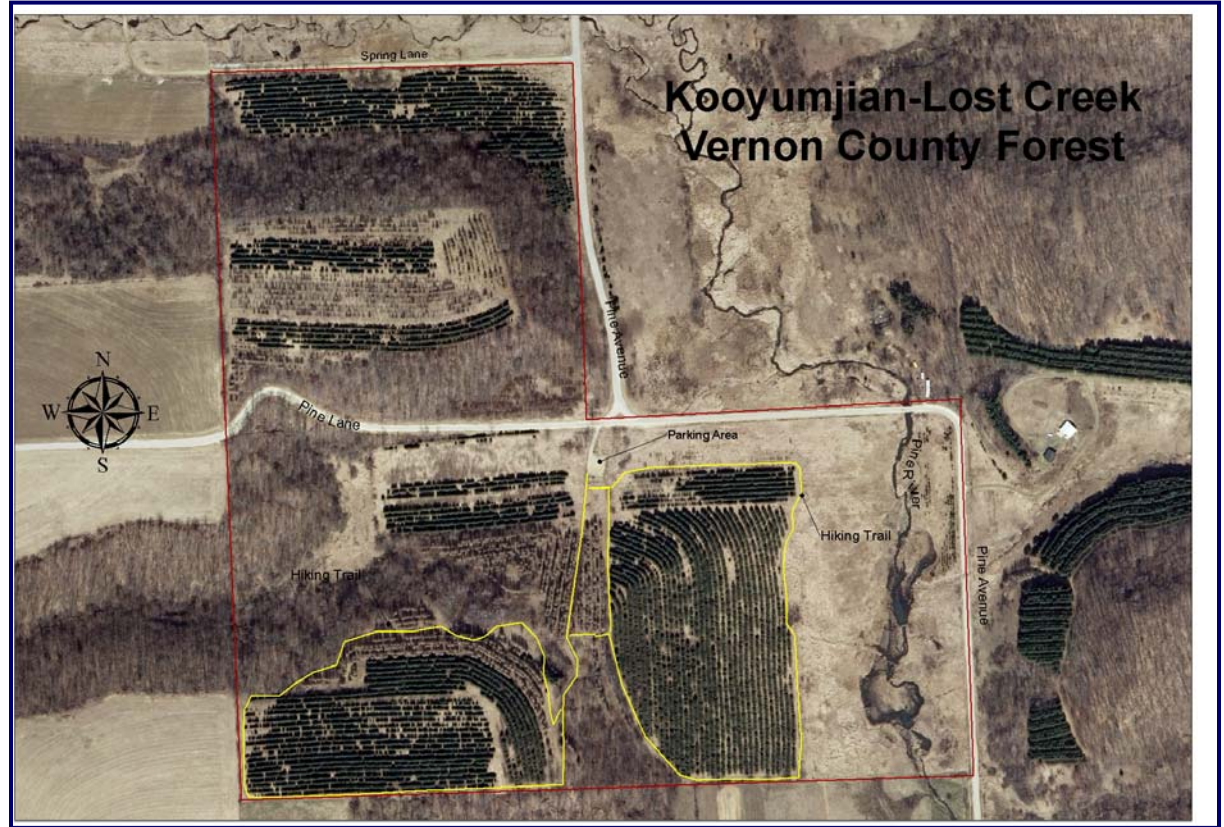
Fishing & Hunting

The headwaters of the Pine River flow through the Kooyumjian-Lost Creek property. The stream has been improved for trout habitat.

Hunting is allowed at Kooyumjian-Lost Creek County Forest per State of Wisconsin hunting seasons and regulations. There are two special hunting rules in mention for Kooyumjian: 1) Only temporary hunting stands are allowed—they must be removed daily, and 2) vehicle access is not allowed in the forest for hauling out big game.

Hiking Trails

Kooyumjian-Lost Creek has a nice maintained hiking trail that originates in the parking area located at the intersection of Pine Avenue and Pine Lane. The trail covers about 1.5 miles, and takes hikers through some of the newer tree plantations, as well as some of the mature timber stands before it passes the natural native bottomland prairie area filled with native wildflowers. It's a nice easy walk for people of all ages and abilities.



Wildflowers in the Native Prairie Grassland

CONTACT INFORMATION

County Forester

(608) 637-5476

andy.lachance@vernoncounty.org

Parks Administrator

(608) 637-5485

adam.ash@vernoncounty.org

Web Site: www.vernoncounty.org/parks

Vernon County

Whether driving the Great River Road, rousting a wild turkey, navigating the Mississippi by houseboat, wilderness tent-camping, staying in rustic cabins, biking cross-country, charting the Blackhawk Trail, hiking around Sidie Hollow Lake, exploring Rustic Roads, bluebird watching at Norskedalen, trout fishing in Timber Coulee or the West Fork Kickapoo River, horseback riding in Wildcat Mountain State Park, riding 250 miles of signed snowmobile trails, spotting bald eagles near Blackhawk park, canoeing or kayaking the Kickapoo River, skiing groomed cross country trails, ice fishing, photographing wild flowers, hunting morels or wild asparagus . . . you'll experience God's Country firsthand in Vernon County.



Picturesque strip-contoured farmland, rock outcroppings, shadowed hollows and soaring ridge-tops, hillsides studded with maples, oak and birch, winding country roads and hidden valleys contribute to the quiet beauty and lure of Vernon County.

Vernon County, Wisconsin is where your family vacation, sportsman adventures and arts & crafts dreams become a reality. Whether you are searching for a quiet day on a secluded lake, a tour through Amish country, fun on the river, or a day of shopping at the local farmer's market or quaint shops, Vernon County has something to offer everyone in your family.

220 Airport Road
Viroqua, WI 54665

Vernon County Land & Water Conservation Dept.

Kooyumjian-Lost Creek Vernon County Forest



Vernon County Land & Water Conservation Dept.

220 Airport Road
Viroqua, WI 54665
(608) 637-5480

Forest Location: Approximately 9 miles east of LaFarge and 9 miles west of Hillsboro on Pine Avenue off or State Highway 82.