

Duck Egg Information

Duck Egg Vernon County Forest is a 707 Acre property that was acquired by Vernon County as part of the installation of a large flood control dam finished in 1990. The dam protects roads, bridges and properties downstream from the negative effects of frequent flooding in the Bad Axe River valley. A side benefit for Vernon County citizens and visitors, over and above flood protection, is they have a great wilderness property to enjoy for hiking, horseback riding, sightseeing, fishing and hunting.

Forest Management

The Duck Egg Vernon County Forest is enrolled in Wisconsin's County Forest Program. The timber is managed for long term production. Most of the proceeds from timber sales at Duck Egg remains in the county. The State of Wisconsin receives 20%, the Town of Jefferson 10% and Vernon County retains the remaining 70%. These funds are used to further enhance forest management at Duck Egg and all other Vernon County Forest properties.

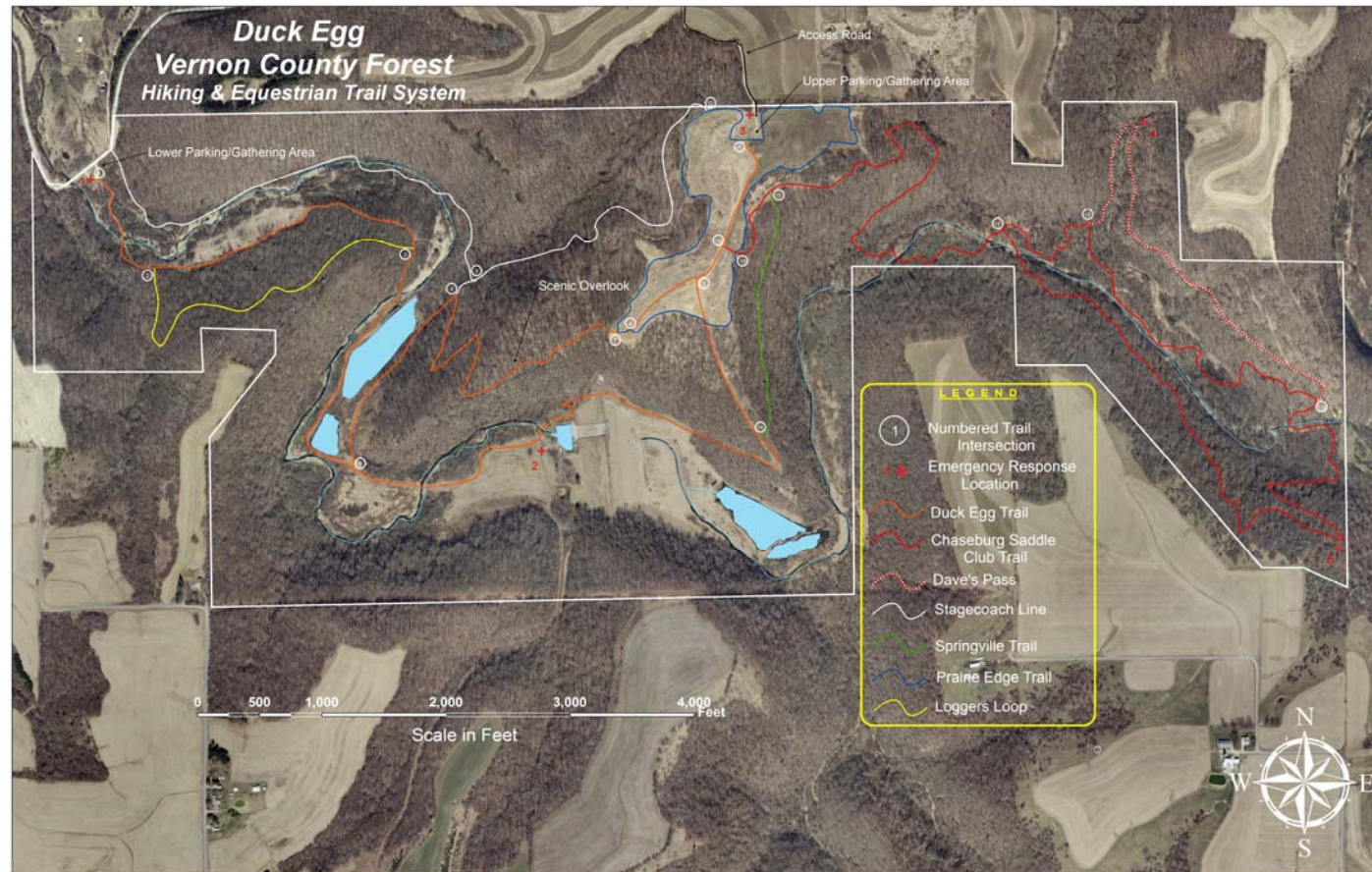
Fishing & Hunting

Through the entire valley at Duck Egg meanders the Springville Branch of the Bad Axe River. Trout habitat improvements have been made in the 1.5 mile stretch from the dam downstream to where the river exits the park. The upper stretch from the easternmost boundary of the Forest to the dam is largely unimproved, natural and can be difficult to access and to fish, however it can provide for some great trout angling.

Hunting is allowed at Duck Egg per State of Wisconsin hunting seasons and regulations. There are two special hunting rules to note for Duck Egg: 1) Only temporary hunting stands are allowed—they must be removed daily, and 2) vehicle access is not allowed in the forest for removing big game.

Hiking & Equestrian Trails

Duck Egg now has 10 miles of maintained combination hiking and equestrian trails. The Chaseburg Saddle Club was instrumental in developing much of the trail system through the forest. Hikers & Riders be prepared as the trail crosses the Springville Branch of the Bad Axe River in several spots along the trail. With 707 acres of wilderness to navigate, you'll most certainly enjoy your time on the trails at Duck Egg.



Scene from the Hiking/Equestrian Trail Near the Scenic Overlook

CONTACT INFORMATION

County Forester
(608) 637-5476
andy.lachance@vernoncounty.org

Parks Administrator
(608) 637-5485
adam.ash@vernoncounty.org

Web Site: www.vernoncounty.org

Vernon County

Whether driving the Great River Road, rousting a wild turkey, navigating the Mississippi by houseboat, wilderness tent-camping, staying in rustic cabins, biking cross-country, charting the Blackhawk Trail, hiking around Sidie Hollow Lake, exploring Rustic Roads, bluebird watching at Norskedalen, trout fishing in Timber Coulee or the West Fork Kickapoo River, horseback riding in Wildcat Mountain State Park, riding 250 miles of signed snowmobile trails, spotting bald eagles near Blackhawk park, canoeing or kayaking the Kickapoo River, skiing groomed cross country trails, ice fishing, photographing wild flowers, hunting morels or wild asparagus . . . you'll experience God's Country firsthand in Vernon County.



Picturesque strip-contoured farmland, rock outcroppings, shadowed hollows and soaring ridge-tops, hillsides studded with maples, oak and birch, winding country roads and hidden valleys contribute to the quiet beauty and lure of Vernon County.

Vernon County, Wisconsin is where your family vacation, sportsman adventures and arts & crafts dreams become a reality. Whether you are searching for a quiet day on a secluded lake, a tour through Amish country, fun on the river, or a day of shopping at the local farmer's market or quaint shops, Vernon County has something to offer everyone in your family.

220 Airport Road
Viroqua, WI 54665

Vernon County Land & Water Conservation Dept.

Duck Egg Vernon County Forest



Vernon County Land & Water Conservation Dept.

220 Airport Road
Viroqua, WI 54665
(608) 637-5480

Forest Location: Approximately 8 miles west of Viroqua, along Irish Ridge Road off of County Trunk Hwy. Y